

P.O. Box 4032 EASTWOOD HARRIS PTY LTD Tel 61 (0)4 1118 7701
Doncaster Heights ACN 085 065 872 Fax 61 (0)3 9846 7700
Victoria 3109 Project Management Systems Email: harrispe@eh.com.au
Australia Software and Solutions Web: <http://www.eh.com.au>

NOTES ON XER EXPORT AND IMPORT

BETWEEN

ASTA POWERPROJECT

AND

IMPORT TO PRIMAVERA VERSION 5.0

BY

PAUL E HARRIS

OF

EASTWOOD HARRIS

TABLE OF CONTENTS

1	BACKGROUND	3
2	UNIQUE ID USE	3
3	LOGIC LINKS, START DATE AND RECALCULATION SAMPLE EXPORTS	3
3.1	FIRST EXAMPLE	3
3.2	SECOND EXAMPLE	6
3.3	THIRD EXAMPLE	7
4	CALENDARS	8
5	RESOURCES	9
6	CODE LIBRARIES	9
7	GUIDELINES FOR EXPORTING TO PRIMAVERA VERSION 5.0	10
8	GUIDELINES FOR IMPORTING INTO PRIMAVERA VERSION 5.0	11
8.1	INTRODUCTION	11
8.2	CALENDARS	11
8.3	IMPORT PROCEDURE	13

1 Background

These notes were developed for a client and may provide some additional information for users to transfer of data to and from Asta PowerProject and Primavera Version 5.0

Some guidelines must be followed if it is important to see the schedule in Primavera Version 5.0 in a similar layout and with the same logic as the Asta Powerproject schedule.

2 Unique ID Use

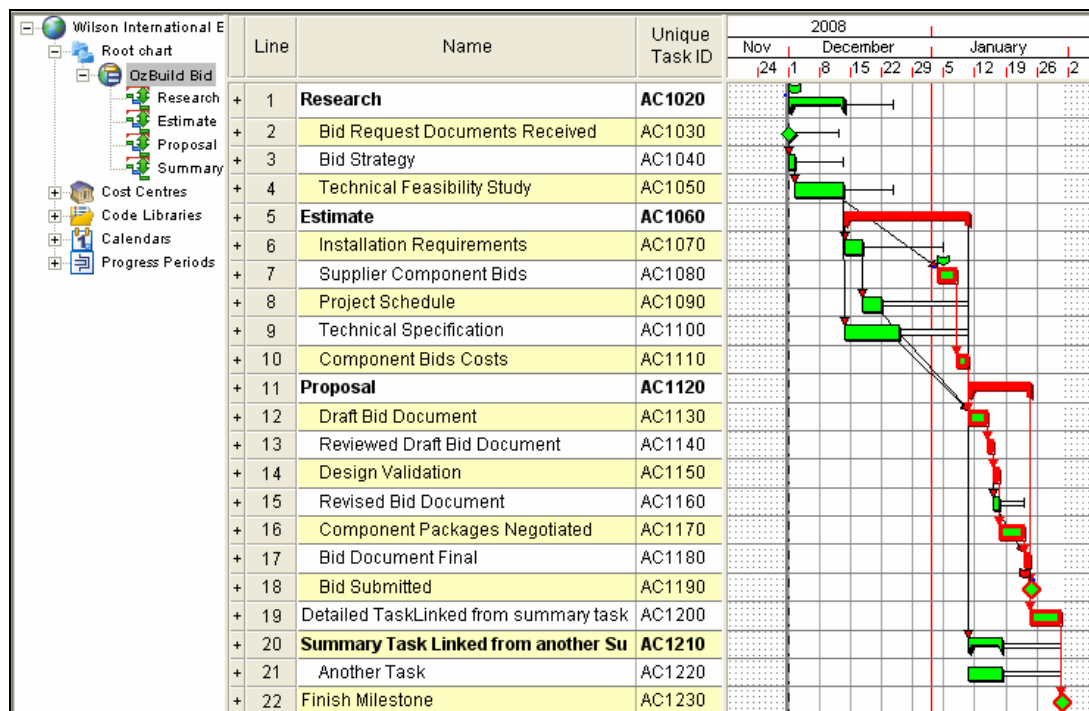
The Power Project Unique ID is used to generate the Primavera Version 5.0 Activity ID. The Unique ID should be set in the Asta Powerproject schedule before saving as a XER file to assist in communication with a person who imports the schedule and to assist in the ordering of the imported schedule.

If the Unique ID is blank then Asta Powerproject creates one automatically and schedule it may be difficult to identify the same task in both schedules when there are many activities.

3 Logic Links, Start Date and Recalculation Sample Exports

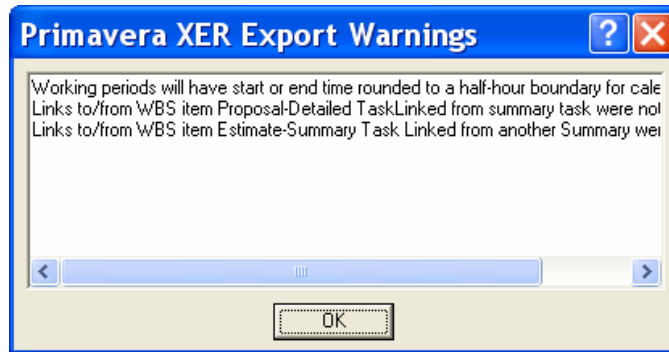
3.1 First Example

The schedule below has links between Summary Tasks and no Asta Projects were imported into Primavera Version 5.0. The summary task links are not exported:



PRIMAVERA VERSION 5.0 TO ASTA POWER PROJECT EXPORT & IMPORT

The following error message was received on export identifying links not exported:



Copy and paste the contents into MS Word to obtain the full text.

Working periods will have start or end time rounded to a half-hour boundary for calendar Default
 Links to/from WBS item Proposal-Detailed TaskLinked from summary task were not exported
 Links to/from WBS item Estimate-Summary Task Linked from another Summary were not exported

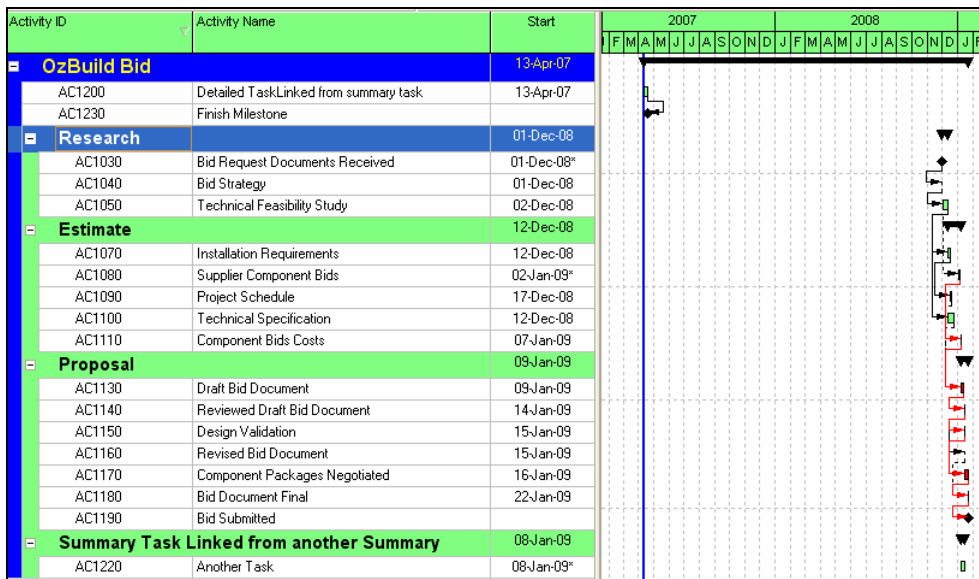
The project imported as per below:

Activity ID	Activity Name	Start	Nov	Dec	Jan	Feb
OzBuild Bid		01-Dec-08				
AC1200	Detailed TaskLinked from summary task	22-Jan-09				
AC1230	Finish Milestone					
Research		01-Dec-08				
AC1030	Bid Request Documents Received	01-Dec-08*				
AC1040	Bid Strategy	01-Dec-08				
AC1050	Technical Feasibility Study	02-Dec-08				
Estimate		12-Dec-08				
AC1070	Installation Requirements	12-Dec-08				
AC1080	Supplier Component Bids	02-Jan-09*				
AC1090	Project Schedule	17-Dec-08				
AC1100	Technical Specification	12-Dec-08				
AC1110	Component Bids Costs	07-Jan-09				
Proposal		09-Jan-09				
AC1130	Draft Bid Document	09-Jan-09				
AC1140	Reviewed Draft Bid Document	14-Jan-09				
AC1150	Design Validation	15-Jan-09				
AC1160	Revised Bid Document	15-Jan-09				
AC1170	Component Packages Negotiated	16-Jan-09				
AC1180	Bid Document Final	22-Jan-09				
AC1190	Bid Submitted					
Summary Task Linked from another Summary		08-Jan-09				
AC1220	Another Task	08-Jan-09*				

PRIMAVERA VERSION 5.0 TO ASTA POWER PROJECT EXPORT & IMPORT

Observations

1. Summary Tasks are converted into WBS Nodes
2. All Detailed Tasks at the highest level are all summarized under the EBS at the top of the schedule
3. Relationships between Summary tasks are not Exported.
4. Tasks under a Summary Task that did not have the logic exported were assigned a constraint.
5. Tasks without summary tasks did not receive a constraint, showing an area of inconsistency in the exporting of summary task links.
6. When recalculated we get:



This is because the Imposed Start from Power project was not imported into Primavera Version 5.0. This issue was not reproduced by Asta and may have been a one off issue.

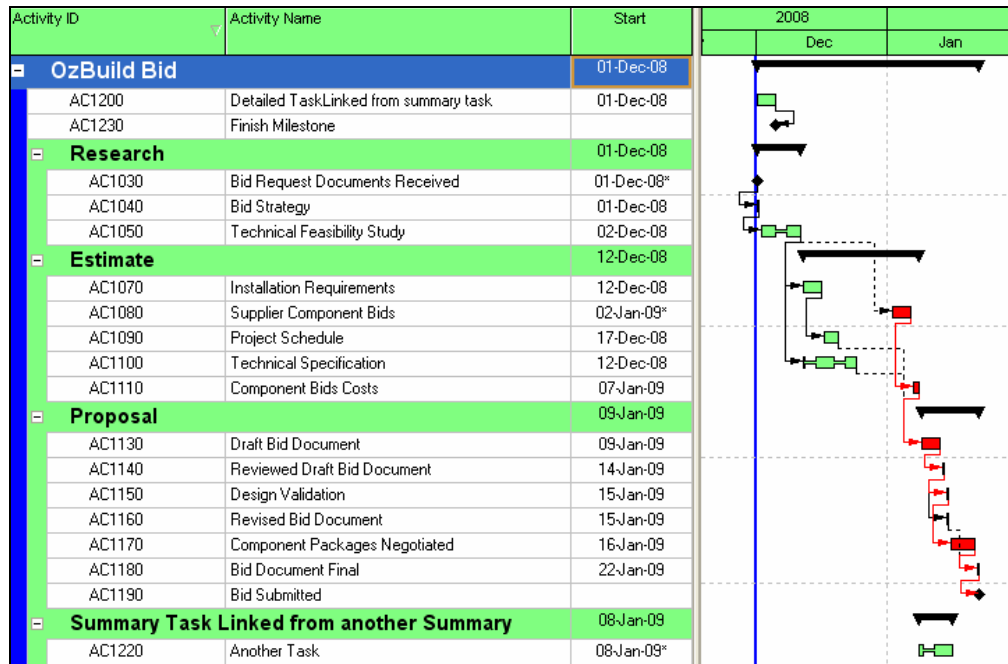
The 'Properties for Wilson International Bid' dialog box shows the following details:

- Name:** Wilson International Bid
- Shght name:** Wilson International Bid
- Status:** Normal
- For:** Paul E Harris
- Start date:** 1/12/2008 8:00 AM
- End date:** 29/01/2009 5:00 PM
- Duration:** 41d 1.5h
- Imposed start:** 01 Dec 2008 08:00 AM
- Progress method:** Duration - Approximate
- Progress date:** 1/12/2008 8:00 AM
- Report date:** 13/04/2007 9:00 AM
- % Complete:** 0.00
- Effort (demand):** 0eh (Deh)
- Work:** 0.00
- Cost:** \$0.00
- Income:** \$0.00
- Number of tasks:** 24
- Number of users:** 1 (as at 30/04/2007 1:56:22 PM)

The 'Layout: Projects Code Assignments' dialog box shows the following details:

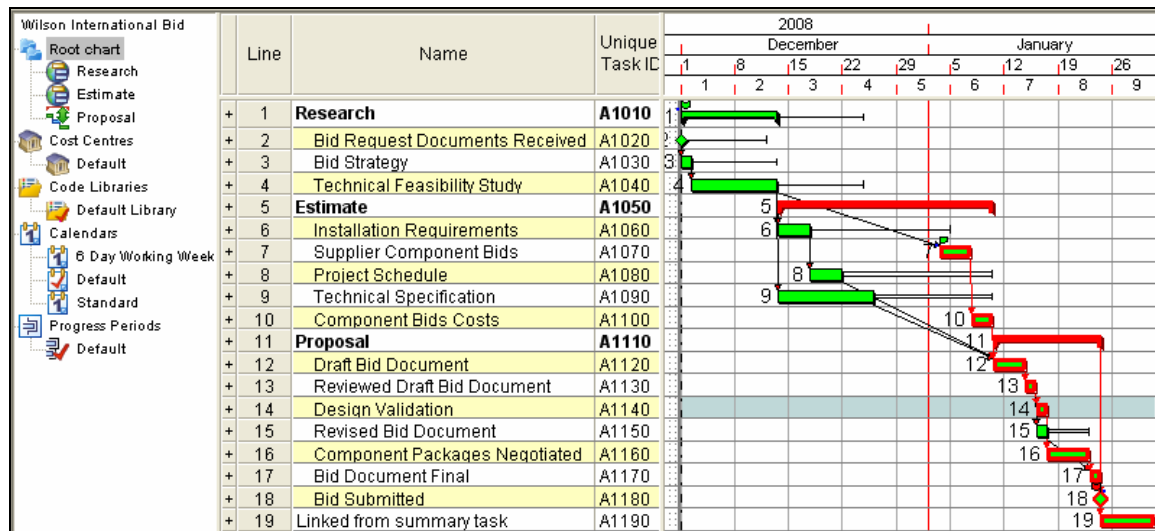
- Project ID:** SA
- Task:** OzBuild Bid
- Schedule Dates:** Planned Start: 13-Apr-07

The Planned Start was manually reset and rescheduled:



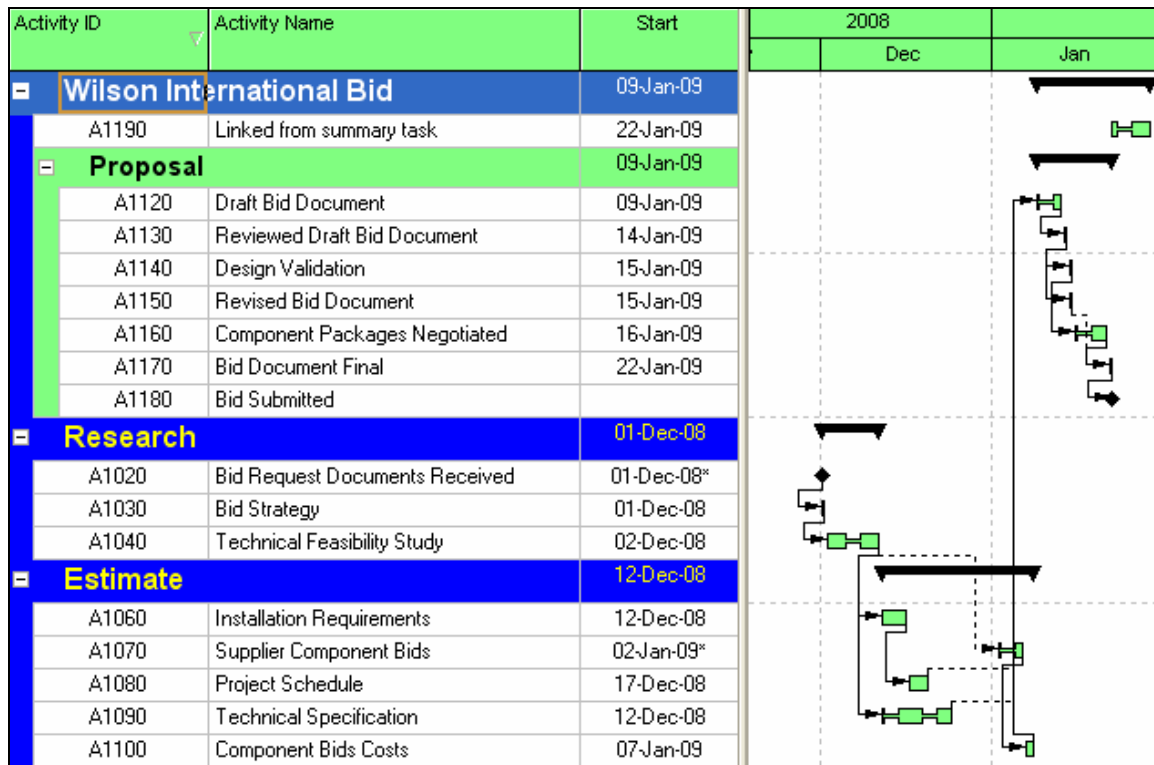
3.2 Second Example

When some Highest Level Summary Activities are Projects then this is the result:



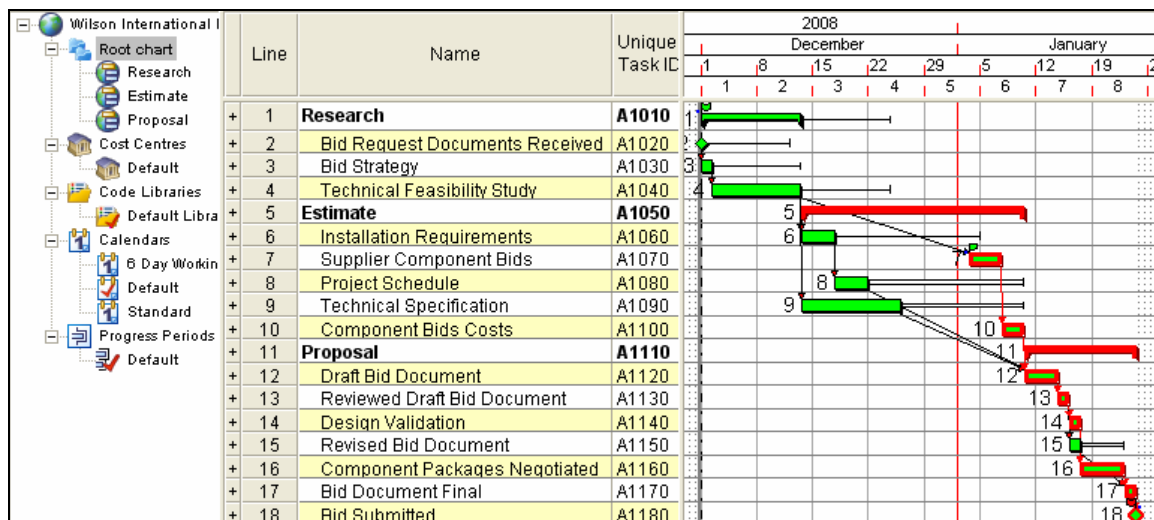
PRIMAVERA VERSION 5.0 TO ASTA POWER PROJECT EXPORT & IMPORT

Projects are imported as projects and the remainder are placed in a project titled with the same name as the root chart.



3.3 Third Example

When all First Level are projects and no detailed tasks at first level:

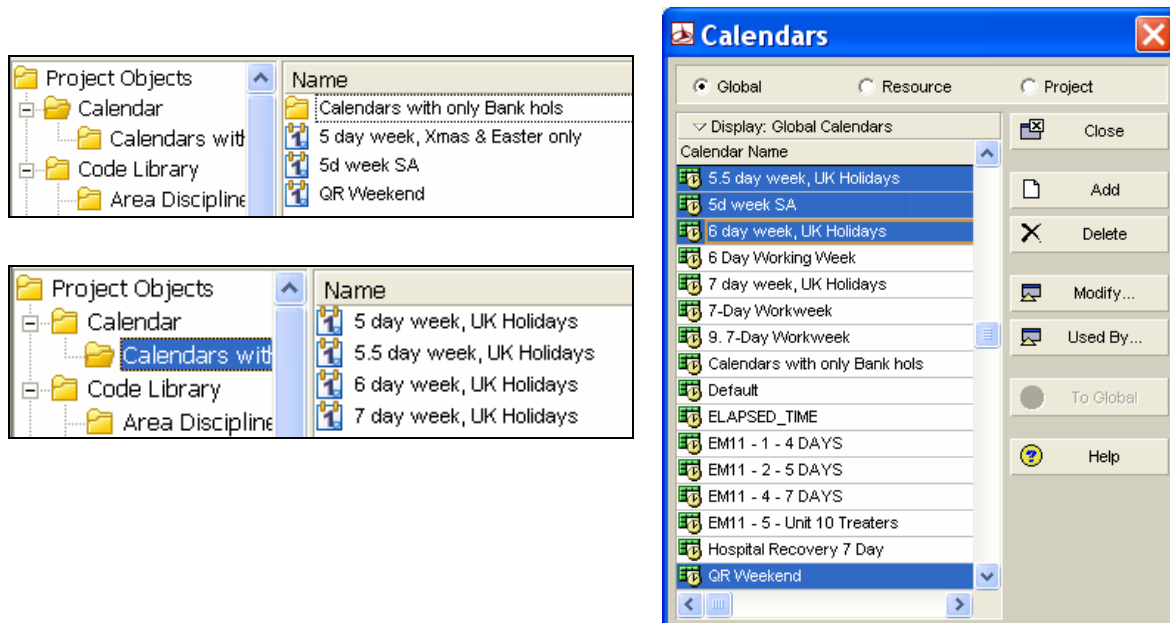


Then these will Import each as a Project in Primavera Version 5.0:

Activity ID	Activity Name	Start	2008	
			Dec	Jan
Research			01-Dec-08	
A1020	Bid Request Documents Received	01-Dec-08*		
A1030	Bid Strategy	01-Dec-08		
A1040	Technical Feasibility Study	02-Dec-08		
Estimate			12-Dec-08	
A1060	Installation Requirements	12-Dec-08		
A1070	Supplier Component Bids	02-Jan-09*		
A1080	Project Schedule	17-Dec-08		
A1090	Technical Specification	12-Dec-08		
A1100	Component Bids Costs	07-Jan-09		
Proposal			09-Jan-09	
A1120	Draft Bid Document	09-Jan-09		
A1130	Reviewed Draft Bid Document	14-Jan-09		
A1140	Design Validation	15-Jan-09		
A1150	Revised Bid Document	15-Jan-09		
A1160	Component Packages Negotiated	16-Jan-09		
A1170	Bid Document Final	22-Jan-09		
A1180	Bid Submitted			

4 Calendars

All calendars are exported and are not held in a linear format as in Power Project:



Power Project Work Patterns are incorporated in the Primavera Version 5.0 calendars.

5 Resources

All Resources are exported to the root of the Primavera Version 5.0 Resource Table:

Project Objects	Name	Availability
Calendar	Asphalt Crew	2.00
Code Library	Bored Piling Crew	5.00
Cost Centre	Crane	1.00
Permanent Resource	Driven Piling Crew	2.00
Progress Period	Earthworks Crew	5.00
Tabular Report	Excavation Crew	5.00
Resource Report	Fill & Compaction Crew	5.00
Consumable Resource	RE Wall Crew	5.00

Display: All Resources				
Resource ID	nits / Time	Title	Resource Name	Resource Type
Innovative Resources	1/h		Innovative Construction Internal Resou...	Labor
Project Specific	1/h		Project Specific Resources	Labor
Subcontractors	1/h		Subcontractor	Labor
Project Costs	1/h		Project Cost Breakdown	Nonlabor
Earthworks Crew	5/h		Earthworks Crew	Labor
Driven Piling Crew	2/h		Driven Piling Crew	Labor
Piling Rig	5/h		Bored Piling Crew	Labor
RE Wall Crew	5/h		RE Wall Crew	Labor
Excavation Crew	5/h		Excavation Crew	Labor
Fill & Compaction Crew	5/h		Fill & Compaction Crew	Labor
Asphalt Crew	2/h		Asphalt Crew	Labor

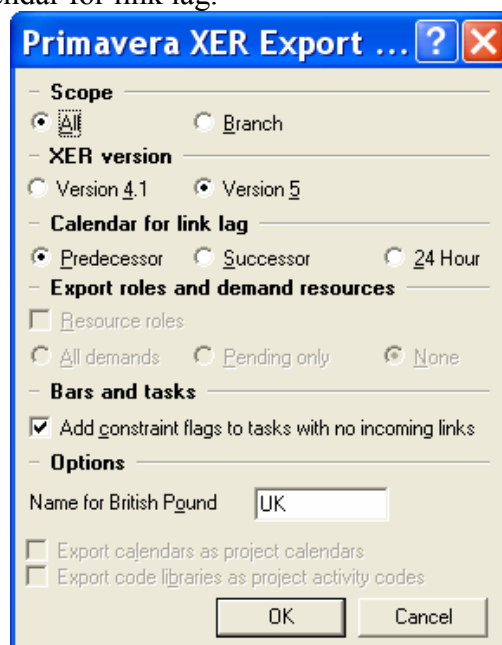
6 Code Libraries

These are exported maintaining their hierarchical structure:

7 Guidelines for Exporting to Primavera Version 5.0

Based on the examples above the following guidelines should be considered when exporting to Primavera Version 5.0.

1. Either all tasks should be under Summary Tasks or all under Projects, but not a mixture.
2. There should be no summary task relationships.
3. It is best if there are no detailed tasks at the root level, all detailed tasks should be either:
 - Under a Summary task, or
 - Part of a Sub Project
 - Any tasks under the root will be grouped at the top of a Primavera Version 5.0 project.
4. All Resources are exported therefore
 - Unused resources should be deleted and
 - Uniquely named so they may be identified in the Primavera Database.
5. All Calendars are exported as Global Calendars when Asta Projects (sub-projects) are used, so it is best to:
 - Delete unused calendars are deleted and
 - Calendars are uniquely identified.
6. All Codes are exported maintaining their Structure.
 - Unused Codes should be deleted and
 - Codes could be uniquely identified.
7. Select File, Save As to export as a XER file.
8. The Primavera Version 5.0 User must inform the Primavera Version 5.0 user of the option for the Calendar for link lag.



8 Guidelines for Importing into Primavera Version 5.0

8.1 Introduction

To be able to export successfully to Primavera Version 5.0 some functions in Asta should not be used. The importation of the Asta Powerproject project file into Primavera Version 5.0 has been considered in the construction of this schedule and the functions available in Asta that are not supported by Primavera Version 5.0 are not being utilise in this schedule.

The file format used by Primavera Version 5.0 for file transfer between to databases is a format titled XER. This file format is used to export a schedule from one Primavera database to another and may saved to and opened by Asta Powerproject.

When the Asta Powerproject “Projects” facility is used the XER then file created by Asta Powerproject when imported into Primavera Version 5.0 will result in the projects being created in Primavera Version 5.0.

8.2 Calendars

When the Asta schedule uses two or more calendars, for example:

1. A 5 d week which is based on an 8 hour working day and
2. A 5 d week which is based on an 11 hour working day.

Th summary durations displayed in days will be incorrect for one of the calendars. The default in Primavera is 8 hours per day so all the 12 hour calendar durations will be displayed incorrectly.

In this situation the durations could be displayed in hours or a Custom Field and Global change used to display the correct durations in days in the Custom Field.

There are several options to display the durations in days correctly in Primavera Version 5.0 when the project has one calendar that does not have the default number hours per day as the database which is normally 8 hours per day.

PRIMAVERA VERSION 5.0 TO ASTA POWER PROJECT EXPORT & IMPORT

1. Create a stand alone database and to display the correct summary durations it is recommended that the Hours/day in the **Admin, Admin Preferences...**, click on the **Time Periods** tab and set them to the values below.

Admin Preferences

General
Timesheets
Timesheet Privileges
Data Limits
ID Lengths
Time Periods
Earned Value
Reports
Options
Rate Types

Hours per Time Period
Specify the number of work hours for each time period.

Hours/Day	Hours/Week	Hours/Month	Hours/Year
11.0	55.0	242.0	2750.0

Allow users to specify the number of work hours for each time period.

Time Period Abbreviations
Specify the abbreviation for each time period.

Minutes	Hours	Days
h	h	d
Weeks	Months	Years
w	m	y

Help Wizard Close

2. If the project is to be imported into an existing multi project database where the default number of hours per day is 8 and your project has 11 hours per day then the user may change their **Edit, User Preferences, Time Units** tab to the values below to display the correct summary durations for this project and for them only:

User Preferences

Time Units
Dates
Currency
E-Mail
Assistance
Application
Password
Resource Analysis
Calculations
Startup Filters

Units Format
Unit of Time: Hour, Sub-unit: Minutes, Decimals: 0
 Show Unit label, Example: 41

Durations Format
Unit of Time: Day, Sub-unit: Hours, Decimals: 0
 Show Duration label, Example: 10d 1h

Units/Time Format
Resource Units/Time can be shown as a percentage or as units per duration
 Show as a percentage (50%)
 Show as units/duration (4h/d)

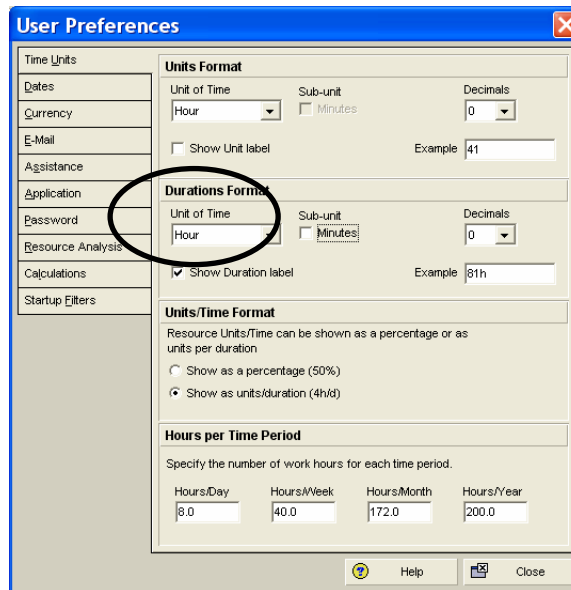
Hours per Time Period
Specify the number of work hours for each time period.

Hours/Day	Hours/Week	Hours/Month	Hours/Year
11.0	55.0	242.0	2750

Help Close

For a user to be able to edit these values the **Allow users to specify the number of work hours for each time period** check box in the **Admin, Admin Preferences...**, the **Time Periods** tab must be checked.

3. Durations should be displayed in hours by editing the **Duration Format, Units per Time** to hours in the **Edit, User Preferences, Time Units** tab:



8.3 Import Procedure

1. Next create a new EPS Node for importing the Asta project into.
2. Create the new OBS node if required
3. Import the projects.
4. Reorder the projects as the order in the WBS View as they will not be imported in the same order as in Asta.
5. Set a baseline before recalculation by copying the imported schedule.
6. The Project Start Dates and need to be manually entered if these are not exported.
7. Recreate the Layouts and Filters as required.
8. Check under Tools, Schedule, Options that the right Calendar is being used for calculation the schedule lag.
9. Recalculate and the difference in the Baseline Dates will show any differences in calculation.