

*P.O. Box 4032 **EASTWOOD HARRIS PTY LTD** Tel 61 (0)4 1118 7701
Doncaster Heights ACN 085 065 872 Fax 61 (0)3 9846 7700
Victoria 3109 Project Management Systems Email: harrispe@eh.com.au
Australia Software and Solutions Web: <http://www.eh.com.au>*

**LINKING P3 DATABASE
WITH ACCESS DATABASE OR EXCEL
BY
PAUL E HARRIS
OF
EASTWOOD HARRIS**

TABLE OF CONTENTS

1	INTRODUCTION	3
2	SUMMARY	3
3	LOAD THE “PERVASIVE ODBC” DRIVERS	4
4	CREATE THE P3 DDF FILES	5
5	ADD THE P3 DATA SOURCE IN WINDOWS.	6
6	LINK TO THE P3 DATABASE IN ACCESS	8
7	LINK TO THE P3 DATABASE IN EXCEL	10
8	PRACTICAL ADVICE ON USING ODBC	13

1 INTRODUCTION

This document describes how to link a P3 (or SureTrak Concentric P3) database with and an Access database or Excel on a Windows 98 machine running Office 2000.

Please send any comments to the author Paul E Harris email harrispe@eh.com.au.

2 SUMMARY

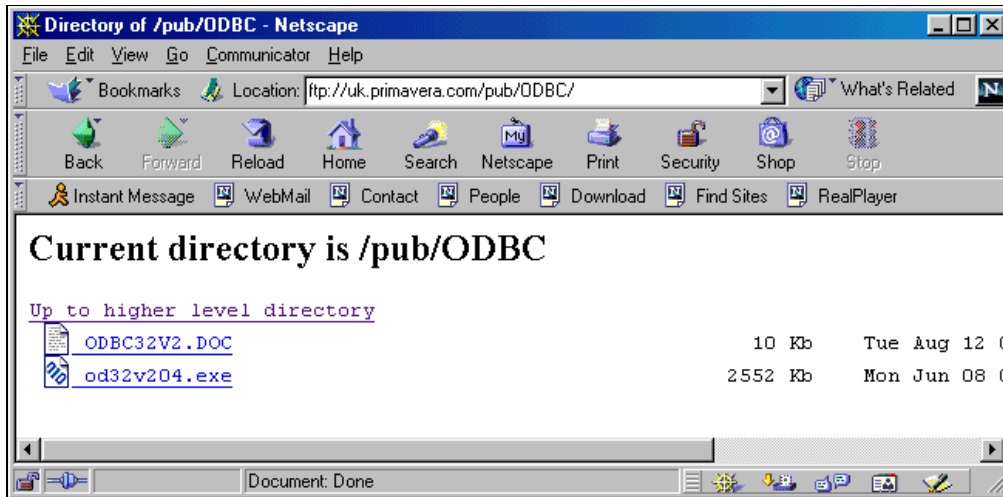
There are four main processes to completed to establish a link between a P3 and an Access database or Excel spreadsheet:

1. Load the “Pervasive ODBC” Drivers.
2. Create the P3 DDF files using the **Tools, Update Data Dictionary...** command from P3 when the required schedule is open. This link may also be made from Access.
3. Add the P3 data source in Windows using the Start, Settings, Control Panel. ODBC Data Sources (32bit) command and adding a source.
4. Link to the P3 database using the Access command **File, Get External Data, Link Tables...** command or to Excel using the **Data, Get external data, New database query...** command.

3 LOAD THE “PERVASIVE ODBC” DRIVERS

P3 uses a Btrieve database. Persuasive ODBC drivers need to be loaded to enable a link to be made from a P3 Btrieve database to an Access database.

These drivers may be downloaded on the Internet from a number of sources. Primavera Tech support has these available on their web pages. The Tech support web page using Netscape, is shown below:



The `odbc32v204.exe` is a self-extracting file it should be executed in a temporary subdirectory:

Name	Size	Type	Modified
od32v204.exe	2,553KB	Application	16/11/01 22:33
Odbc32v2.doc	11KB	Microsoft Word Document	16/11/01 22:24
inst32lex	313KB	EX_File	18/01/97 11:04
_isdcl.exe	8KB	Application	07/09/95 19:22
_isres.dll	89KB	Application Extension	20/01/97 14:37
_setup.dll	6KB	Application Extension	19/12/96 16:03
_setup.lib	185KB	LIB File	24/03/98 14:19
Data.1	9KB	1 File	24/03/98 14:19
Data.2	1,399KB	2 File	24/03/98 14:19
Data.3	500KB	3 File	24/03/98 14:19
Disk1.id	1KB	ID File	03/02/98 17:37
Disk2.id	1KB	ID File	03/02/98 17:37
Disk3.id	1KB	ID File	03/02/98 17:37
Readme.txt	17KB	Text Document	23/03/98 13:07
Setup.exe	45KB	Application	18/01/97 10:53
Setup.ins	17KB	Internet Communication S...	24/03/98 14:19
Setup.pkg	2KB	PKG File	24/03/98 14:19
Uninst.exe	293KB	Application	18/01/97 10:40

The set-up file run and the drivers installed.

Restart the machine.

4 CREATE THE P3 DDF FILES

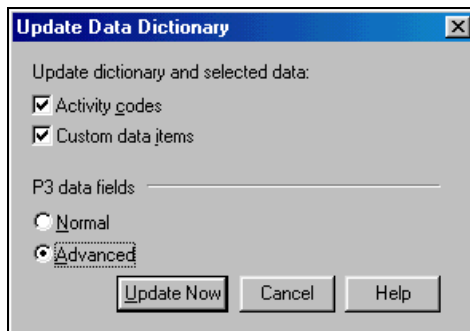
There are three files required to create a link between a P3 database and Access database:

- Index.ddf
- File.ddf and
- Field.ddf.

These three files are not backed up when the P3 backup function is used to backup and compress a P3 database.

To create these files:

- Open the required P3 schedule
- Select **Tools, Update Data Dictionary...** to open the **Update Data Dictionary** form

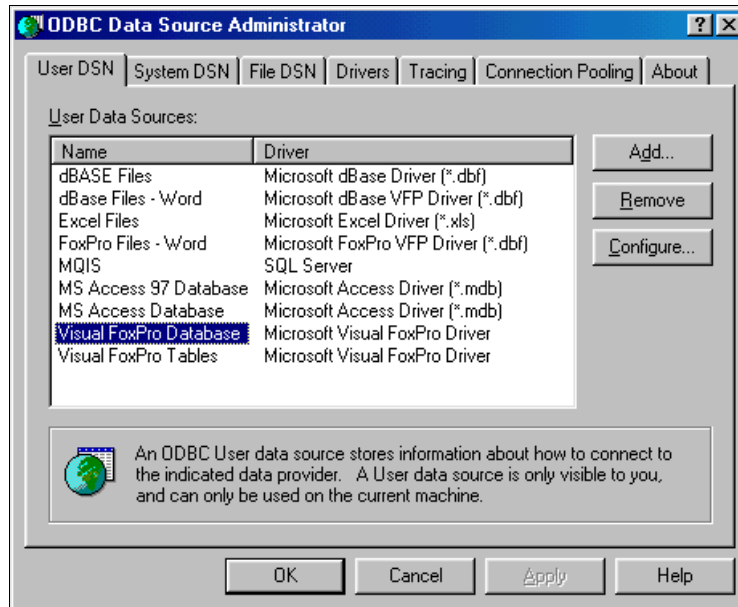


- Select as above and this will ensure that all data is available to the Access database
- Click on **Update Now** to create the files, which will reside in the same directory as the P3 database.

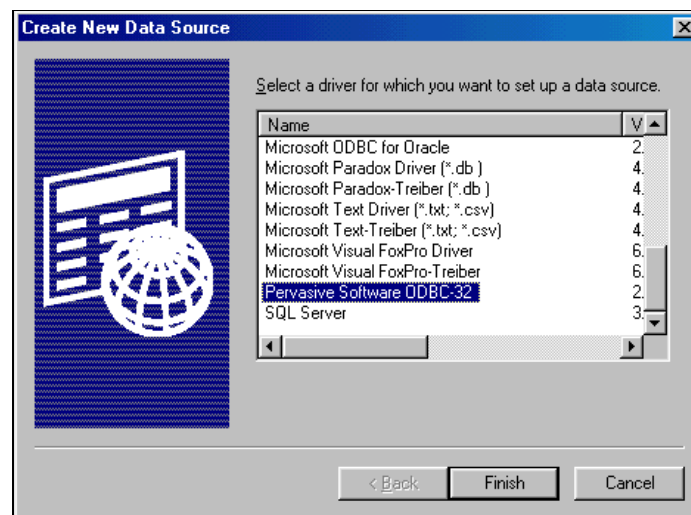
Name	Size	Type	Modified
Field.ddf	77KB	DDF File	16/11/01 22:44
File.ddf	13KB	DDF File	16/11/01 21:33
Index.ddf	20KB	DDF File	16/11/01 22:44
Joo2ac2.p3	5KB	P3 File	16/11/01 11:07
Joo2acc.p3	3KB	P3 File	16/11/01 11:06
Joo2act.p3	6KB	P3 File	16/11/01 11:06
Joo2aud.p3	12KB	P3 File	16/11/01 11:06
Joo2cal.p3	13KB	P3 File	16/11/01 11:06
Joo2dir.p3	8KB	P3 File	16/11/01 11:07
Joo2dst.p3	1KB	P3 File	16/11/01 11:06
Joo2hol.p3	3KB	P3 File	16/11/01 11:06
Joo2im.p3	10KB	P3 File	16/11/01 11:06
Joo2lay.p3	3KB	P3 File	16/11/01 11:06
Joo2log.p3	6KB	P3 File	16/11/01 11:06
Joo2plt.p3	80KB	P3 File	16/11/01 11:06
Joo2ppa.p3	6KB	P3 File	16/11/01 11:06
Joo2rel.p3	4KB	P3 File	16/11/01 11:06
Joo2rep.p3	148KB	P3 File	16/11/01 11:06
Joo2res.p3	8KB	P3 File	16/11/01 11:06
Joo2rb.p3	6KB	P3 File	16/11/01 11:06
Joo2spr.p3	6KB	P3 File	16/11/01 11:06
Joo2str.p3	4KB	P3 File	16/11/01 11:06
Joo2stw.p3	7KB	P3 File	16/11/01 11:06
Joo2tim.p3	11KB	P3 File	16/11/01 11:06

5 ADD THE P3 DATA SOURCE IN WINDOWS.

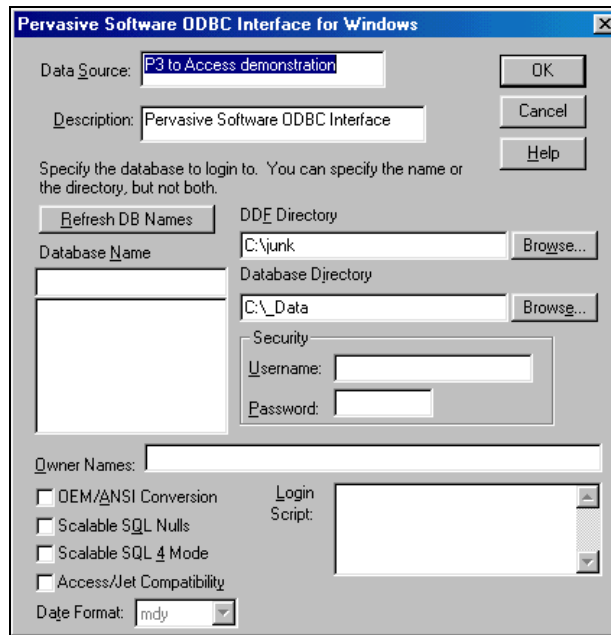
In Windows using the **Start, Settings, Control Panel, ODBC Data Sources (32bit)** command open the **ODBC Data Source Administrator**:



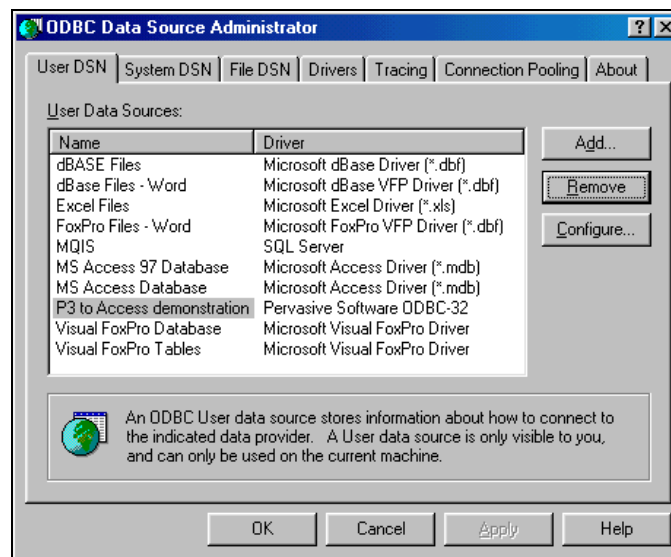
- Click on the **Add** icon and scroll down and click on the Pervasive line



- Click on the **Finish** icon, the Pervasive Software **ODBC Interface for Windows** form will be displayed.



- Give the Data Source a name **P3 to Access demonstration** is used above
- Select the directory for the P3 database under **DDE Directory**
- Select the directory for the Access database under **Database Directory**
- Click on **OK** and you will be returned to the **ODBC Data Source Administrator**, the data source will be displayed.

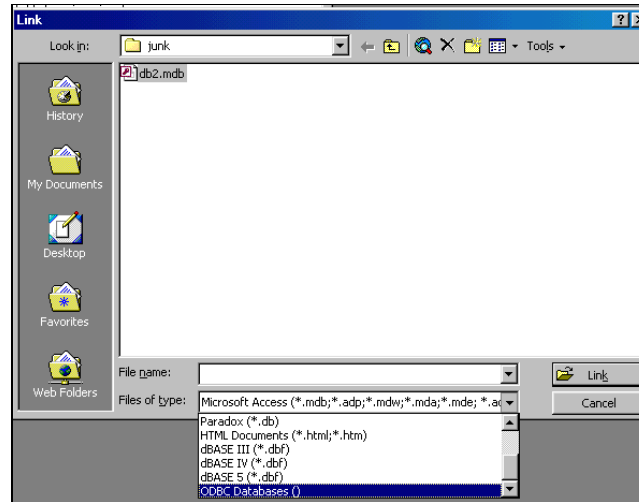


- Click on **Configure** to edit the data source.

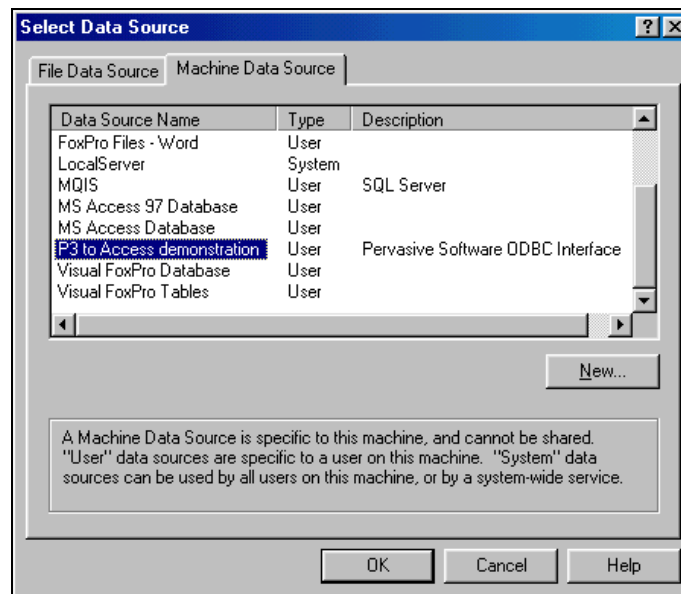
6 LINK TO THE P3 DATABASE IN ACCESS

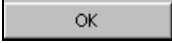
To link your access database to the P3 database:

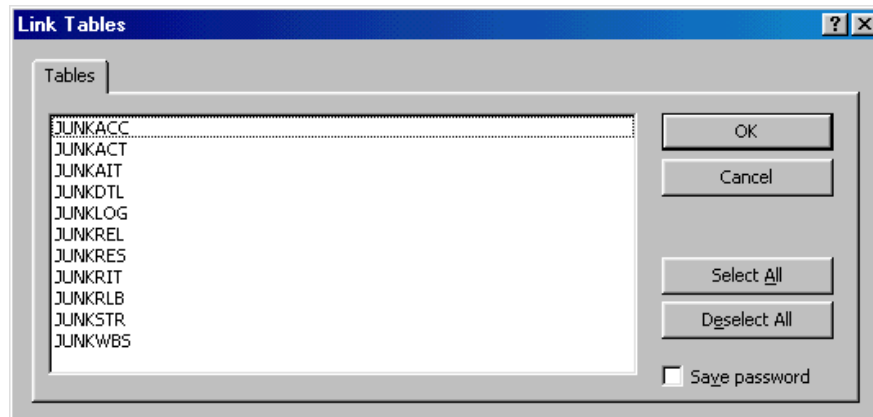
- Open your Access Database
- Select **File, Get External Data, Link Tables...**, this will open the Link form:



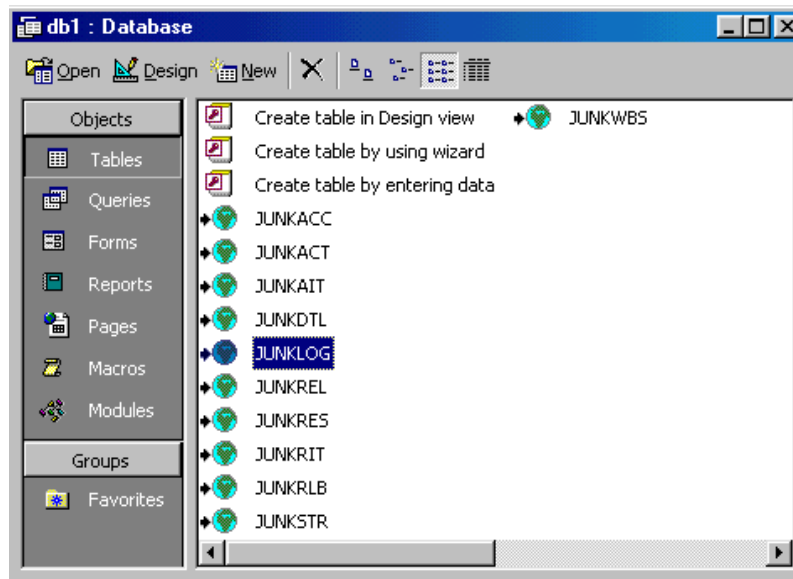
- Select ODBC Databases () from the dropdown list
- The Select database form will open, select the **Machine Data Source** Tab
- Select the data source created earlier:



- The P3 database is then read, this may take some time with large schedules, then the **Link Tables** form will open
- Select the tables you wish to work with and click on 



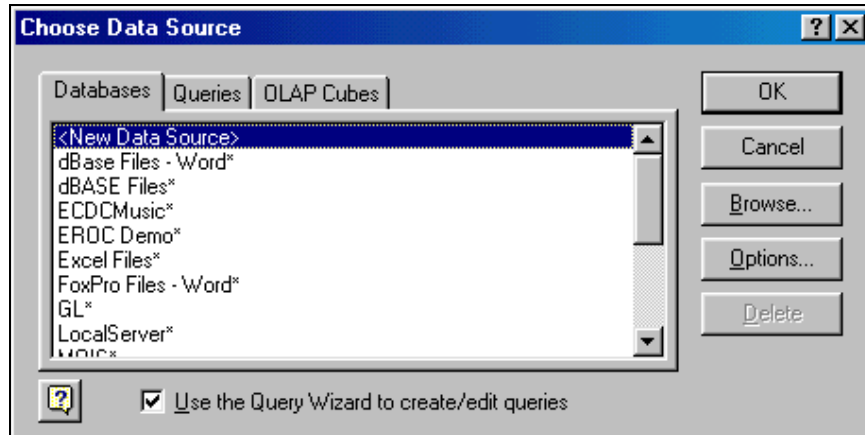
- The files will be displayed in the Access database window, JUNK.P3 was linked in the example below:



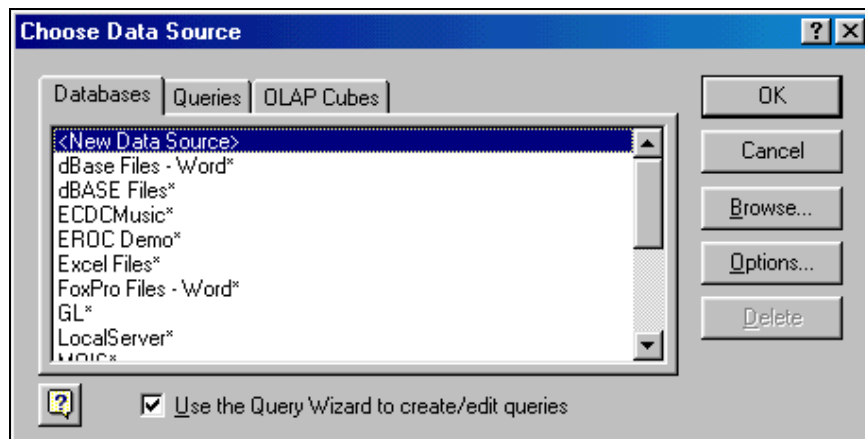
7 LINK TO THE P3 DATABASE IN EXCEL

To link your Excel database to the P3 database:

- Open your Excel spreadsheet
- Select **Data, Get external data, New database query...** to open the **Choose Data Source** form:

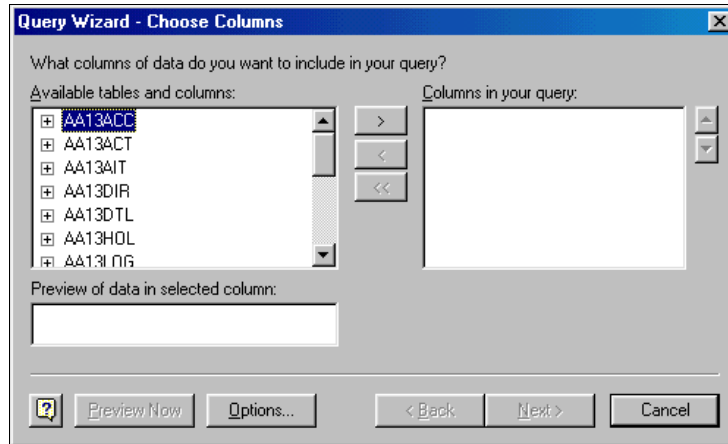


- Select the database source you have created.
- The **Choose Data Source** form will appear.

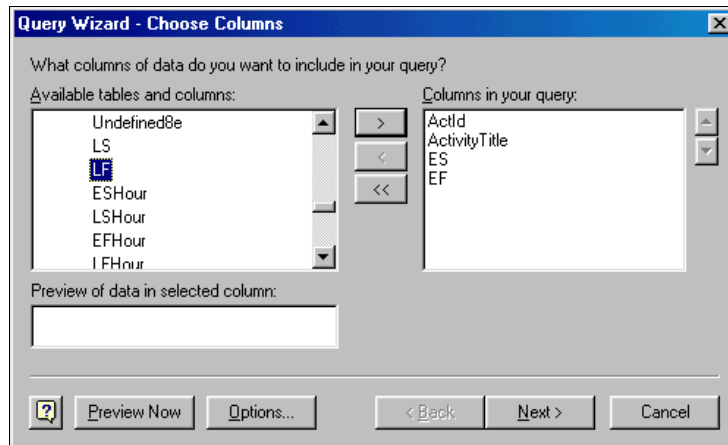


- Select the required query.

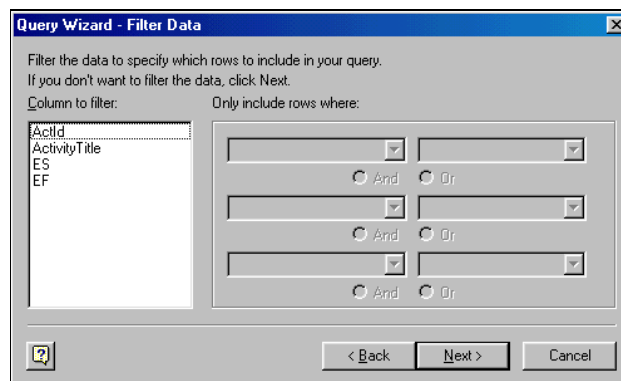
- The **Query Wizard – Choose Columns** form will open.



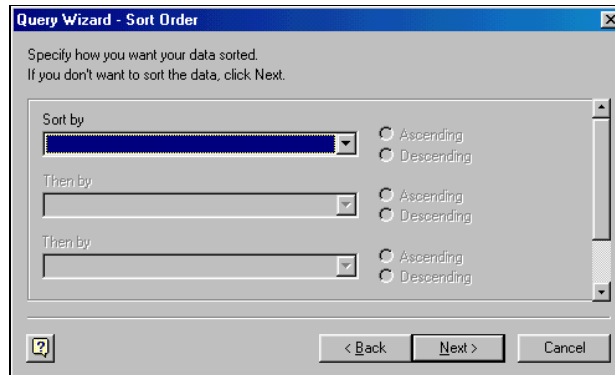
- Select the Tables and/or fields in the tables you require.



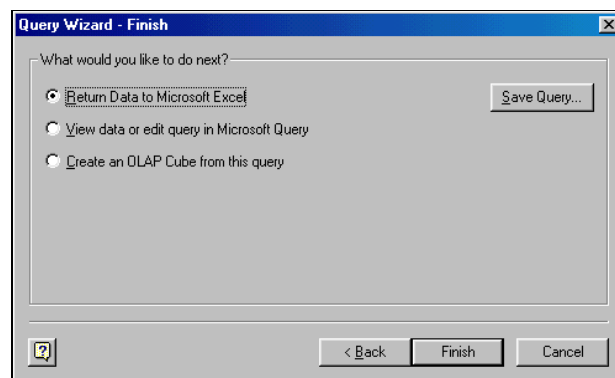
- Click **Next** to open the **Query Wizard – Filter Data** where you may choose to filter your data.



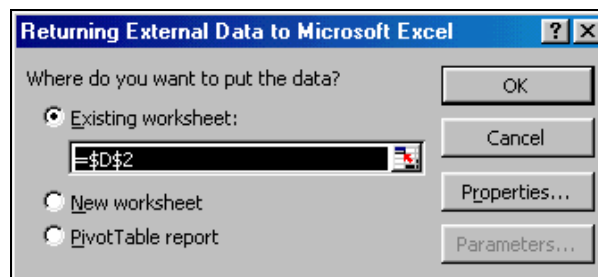
- Click Next to open the **Query Wizard – Sort Order** to choose how to sort your data:



- Click Next to open the **Query Wizard – Finish** form to choose how to sort your data:



- Select **Return Data to Microsoft Excel** and click Next to open the **Returning External Data to Microsoft Excel** form to return your data:



- The data will be returned to Excel.

	A	B	C	D
1	ActId	ActivityTitle	ES	EF
2	02PBG031	Ring 31	28/02/02	28/02/02
3	02PBG031X	Ring 31	28/02/02	28/02/02
4	02PBG032	Ring 32	28/02/02	28/02/02
5	02PBG032X	Ring 32	28/02/02	28/02/02
6	04PBG038	Ring 38	01/03/02	13/03/02
7	04PBG038X	Ring 38	01/03/02	13/03/02
8	04PBG039	Ring 39	01/03/02	13/03/02
9	04PBG039X	Ring 39	01/03/02	13/03/02
10	04PBG040	Ring 40	01/03/02	12/03/02

8 PRACTICAL ADVICE ON USING ODBC

The Btrieve files must be loaded on a computer before this function will work. Loading the Pervasive drivers alone will not allow the linking of files. Loading P3 or SureTrak onto a computer will load the required files.

When importing into P3 or SureTrak you must be aware of your Autocost rules as they may change your imported data when you import.

A permanent link between files is not a good idea as schedules spend a significant amount of time in the update status where the data is not in effect correct. The scheduler must be allowed to nominate when the data is exported or imported.